

2026

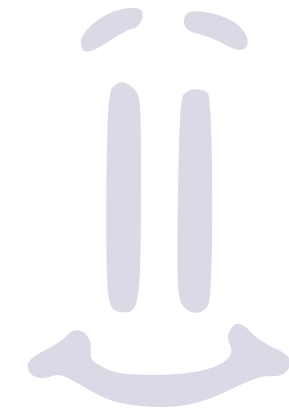


**SHELLDALE**  
FAMILY GATEWAY

# **BUILDING HEALTHY FUTURES:**

With Your Support



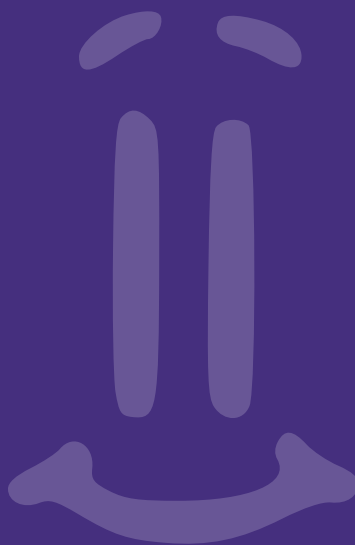


# WE ARE SHELLDALE FAMILY GATEWAY

We are a community-based non-profit organization in Guelph, Ontario, providing programs and support for children, youth, and families, especially in the Onward Willow neighbourhood. We focus on building a healthy, connected, multicultural community through education, recreation, and family services.

# OUR PROGRAMS

Shelldale Family Gateway offers a range of community-driven programs that support children, youth, and families through nutrition, education, recreation, and social services. Each program is designed to strengthen connections, build skills, and promote well-being across the Onward Willow neighbourhood. Supporting families across the 1-square-kilometre Onward Willow community.



## Breakfast Club

A free morning program offering kids from Junior Kindergarten and up a healthy start to their school day



## Afterschool Program

Daily After School Programs for children in Kindergarten to Grade 6



## Teen Program

SFG is a GROVE YWHO Hub - & proud to offer programs for Teens from Grade 6 & up!



## Summer Camp

Summer Camp provides a full season of adventure, creativity, and outdoor play, giving children a vibrant place to grow, explore, and shine.

# COMMUNITY IMPACT



**2,050**

Volunteer Hours



**20,730**

Visits to programs



**25**

Community Partnerships

# HOW YOU'LL HELP OUR COMMUNITY THRIVE

Our programs are always full – and your donations make it possible for us to:



**Launching New Programs**



**Inspiring Creativity**



**Improving Snacks & Nutrition**



**Creating Welcoming Spaces**



**Funding Trips & Hands-On Experiences**



**Strengthening Community Events**



**Expanding Our Capacity**



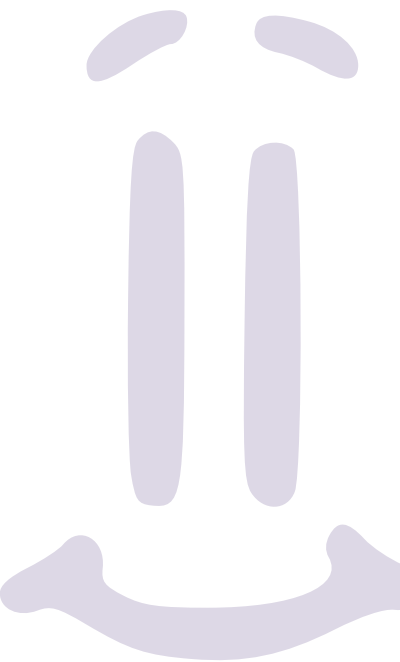
**SHELLDALE**  
FAMILY GATEWAY



Your donations strengthens our community by supporting essential programs, safe gathering spaces, and vital resources for children, youth, and families.

Each gift helps provide healthy meals, engaging activities, and meaningful opportunities that help families thrive. We also rely on donated supplies such as snacks, craft materials, cleaning products, and other daily essentials.

*Together, we can continue building a welcoming neighbourhood where every family feels supported.*





# When you give...

**Shelldale Family Gateway becomes so much more than a community centre.**

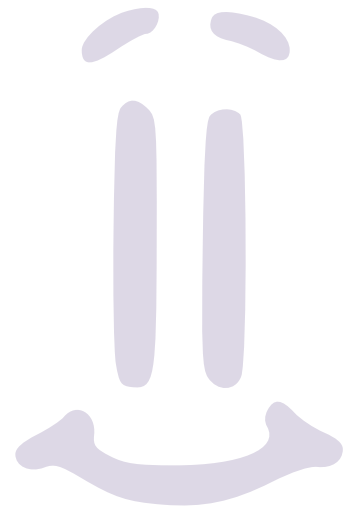
**It becomes a lifeline —**

a place where children arrive searching for connection and leave feeling seen, supported, and full of possibility.





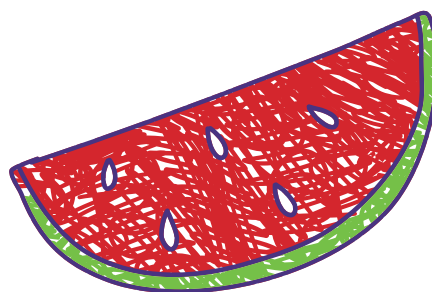
# It's where laughter replaces worry, where confidence takes root



and where families find the stability and care they need to keep going.

**Your generosity fuels moments of safety, joy, and hope.**

Because of you, children discover their strengths, families feel less alone, and brighter futures begin — one act of kindness at a time.





"Shelldale Family Gateway is the best because they like to help people and be kind to others."

*-Yorkabel*

"I like to play with my friends and hanging outside and I love Shelldale Family Gateway because the volunteers and staff are the best and so kind."

*-Senait*



"At Shelldale Family Gateway i like to see my Best Friends. Shelldale Family Gateway makes me feel exited to see my friends."

*-Mai L.*



"I like to engage with kids, doing some activities for example playing sports, cooking and drawing. It makes me feel good, knowing that they are having fun and especially they are safe."

*-Dave*



"Every Thursday we get to do different art activities and they are pretty fun! I have lots of fun at Shelldale Family Gateway."

*-Josephine L.*





**Because every young  
person deserves a  
village behind them.**



**Contact Us**

519-824-8498  
info@shelldale.ca



**Follow us**

@shelldalefg



**Website**

www.shelldale.ca